



# GeoSystems

Information Technology

A central image shows a glowing blue globe of the Earth, held by two hands in a dark suit. The globe is surrounded by a grid of light blue dots and lines, suggesting a digital or spatial data environment. Overlaid on the globe is a red-bordered box containing the word 'SUCCESS' in large, white, bold, sans-serif capital letters.

SUCCESS

FROM DESIGN AND DEVELOPMENT OF BUSINESS SYSTEMS, MOBILE APPS AND SPATIAL ANALYSIS AND VISUALIZATION; TO CREATING STRATEGIES TO USE GIS/RS AND DELIVERY OF CLOUD SOLUTIONS AND TRAINING.

WE DO IT ALL

# insight

Established **in 2006**

Started **in Saudi Arabia**

Rapidly expanded around  
other countries:

**United Arab Emirates,  
Kuwait, Bahrain, Oman,  
Qatar, Iraq, and Jordan**

Securing many projects  
**in all the above countries**

Awarded 4 times  
**as the Highest Sales and  
Best Representative  
for ERDAS in Europe,  
Middle East and Africa**

[www.GeoSystems-me.com](http://www.GeoSystems-me.com)



# Our Services

From

Design and Development of business systems,  
Mobile Apps and Spatial Analysis and Visualization;

To

Creating Strategies to use GIS/RS  
and Delivery of Cloud Solutions and Training.

**we do it all**

# Our Services



## SMART CITY

Smart City brings together technology, government, and society. By fusing automation and IoT with real-time analytics capabilities, city leaders increase the quality of urban services and citizen engagement, while decreasing overall costs and resource consumption.



## BIG DATA

Combining multiple Big Data information feeds, maintaining source data formats, and processing data at industry-leading speeds are the keys to gaining the information insight that is critical for decision making and ultimately enables you to turn data into information, and information into insight.



## NATIONAL MAPPING AGENCIES

Efficiently deliver mapping information for the entire country using Hexagon's Geospatial division solutions, providing the authoritative spatial data infrastructure for your nation.



## UTILITIES

From visualizing dynamic information to delivering interactive maps to stakeholders, utilities solutions from Hexagon's Geospatial division provide location intelligence and analytics to efficiently monitor the health of infrastructure above and below ground.



## DEFENSE & INTELLIGENCE

The understanding of geospatial intelligence (GEOINT) and information is a key enabler of Battlespace Situational Awareness for military forces. As new intelligence, surveillance, and reconnaissance (ISR) platforms and sensors come online, military forces around the world face daily challenges to collect, analyze, and disseminate an ever-increasing volume of rich imagery and intelligence products.

Hexagon Geospatial defense solutions help transform complex data into meaningful information necessary for informed, mission-critical decision making.



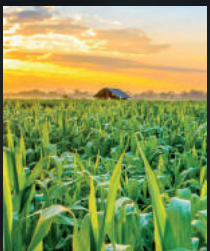
## OIL AND GAS

Gain greater insights and efficiencies in oil and gas analytics, exploration, and operations with location intelligence solutions from Hexagon's Geospatial division.



## MARITIME

To protect people, infrastructure, and cargo at seaports and at sea, Hexagon's Geospatial division provides real-time analytics and intelligence technology for both commercial and military agencies, leading to a smart digital reality for maritime interests.



## AGRICULTURE

Optimizing farm resources and field operations through visual analytics provided by Hexagon's Geospatial division agriculture solutions leads to precision and predictive decision making for agriculture managers.



## AVIATION

Air traffic control systems, and operations planning and execution systems built with technology from Hexagon's Geospatial division optimize air traffic and regulate diverse airspace to provide decision and information management support for aviation experts.



## MINING

Optimize mine planning and operations with leading-edge solutions from Hexagon's Geospatial division, ensuring maximum efficiency, safety, and output of rich resources.



## TRANSPORTATION

Model and analyze transportation networks using digital solutions from Hexagon's Geospatial division, connect the field to the office to accelerate real-time location intelligence, enabling effective network and asset management.

## Luciad



Luciad is a leading provider of high-performance 5D visualization and analysis solutions with software offerings that are completely interoperable with other systems, technology and data. This empowers organizations in industries ranging from defense to aviation and smart cities to create diverse solutions with real-time data and analysis capabilities. These capabilities are often pertinent to critical operations and increase resource conservation and efficient operations.

- Accurate & High Performance Results
- Clean Design Implementation & Exceptionally Fast Development
- De Facto Standard for Many of the Most Demanding Industries
- Flexible & Robust

## ALTAIR

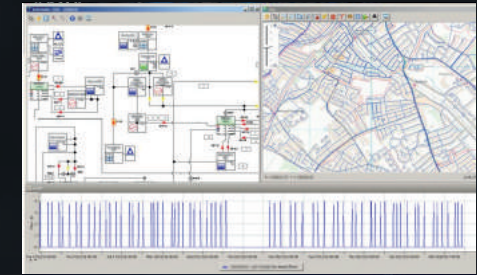


The smartest most innovative intelligence-led transportation and fleet management solution for businesses and governments worldwide

ALTAIR+ is globally accessible over the Intelligent Cloud but it is also offered as a hybrid model that can be deployed on-premise on our customer's data centers. It is a Big Data solution by design with embedded AI capabilities, specifically combining machine learning with predictive business intelligence and advanced simulation tools.

This means that for each vertical we offer a simple cost-effective solution that offers significant value to a set of industries. Every organization that runs or operates a fleet of ground vehicles can significantly benefit by subscribing to our platform.

## Netbase Smart Water Solution



Netbase is a mature Water Management System, developed by Crowder Consulting in the UK. The system incorporates industry best practice for water networks and NRW management. It is implemented with expert consultancy services in data and water networks.

Netbase has a suite of applications that have been developed over many years, working in partnership with major Water Utilities. They embody water engineering principles and best practice. The network information application provides the core functionality of the system for navigating, displaying and analysing the information in the database tables. The LATIS and Sumdat applications provide the core functionality of the time series data with graphical displays, daily summaries and analysis.

# Constantly strive

to serve you with our partners



Corporate Member

[www.GeoSystems-me.com](http://www.GeoSystems-me.com)





**GeoSystems**  
Information Technology

920000402  
[www.GeoSystems-me.com](http://www.GeoSystems-me.com)  
[info@GeoSystems-me.com](mailto:info@GeoSystems-me.com)